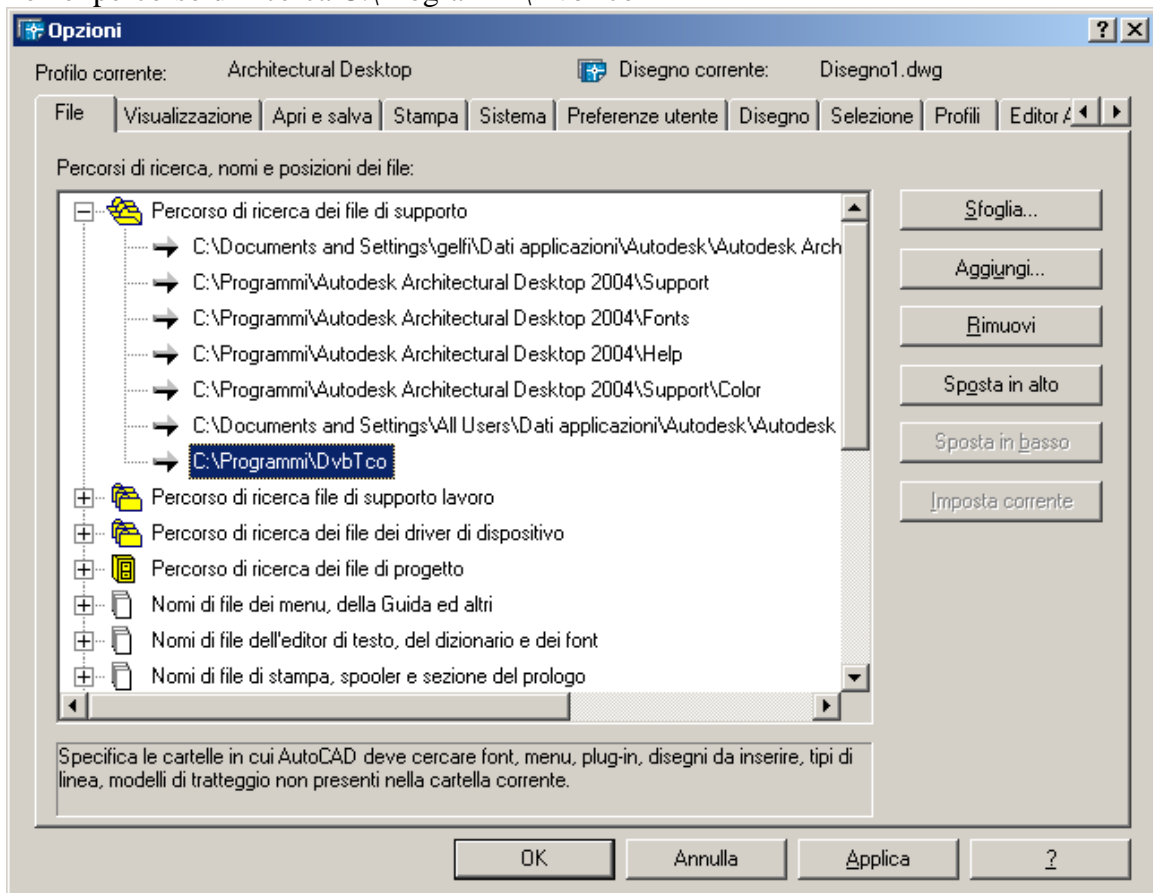


Configurazione manuale di DvbTco

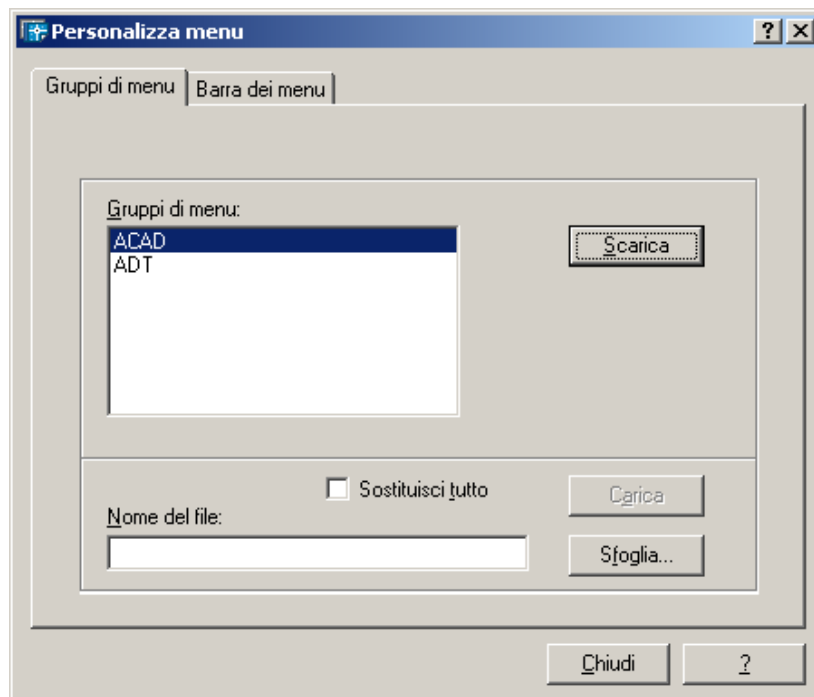
Aprire Autocad 2004 o 2006 o successivi

Comando: `_options`

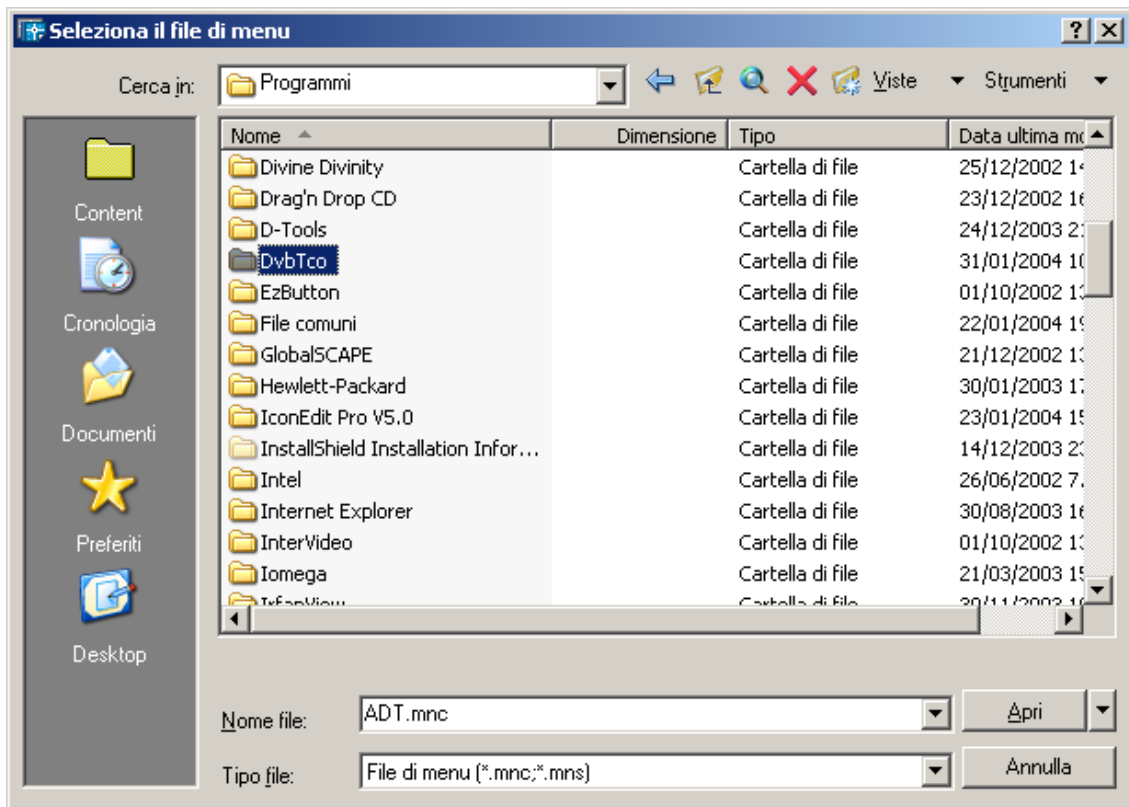
Inserire nel percorso di ricerca `C:\Programmi\DvbTco`



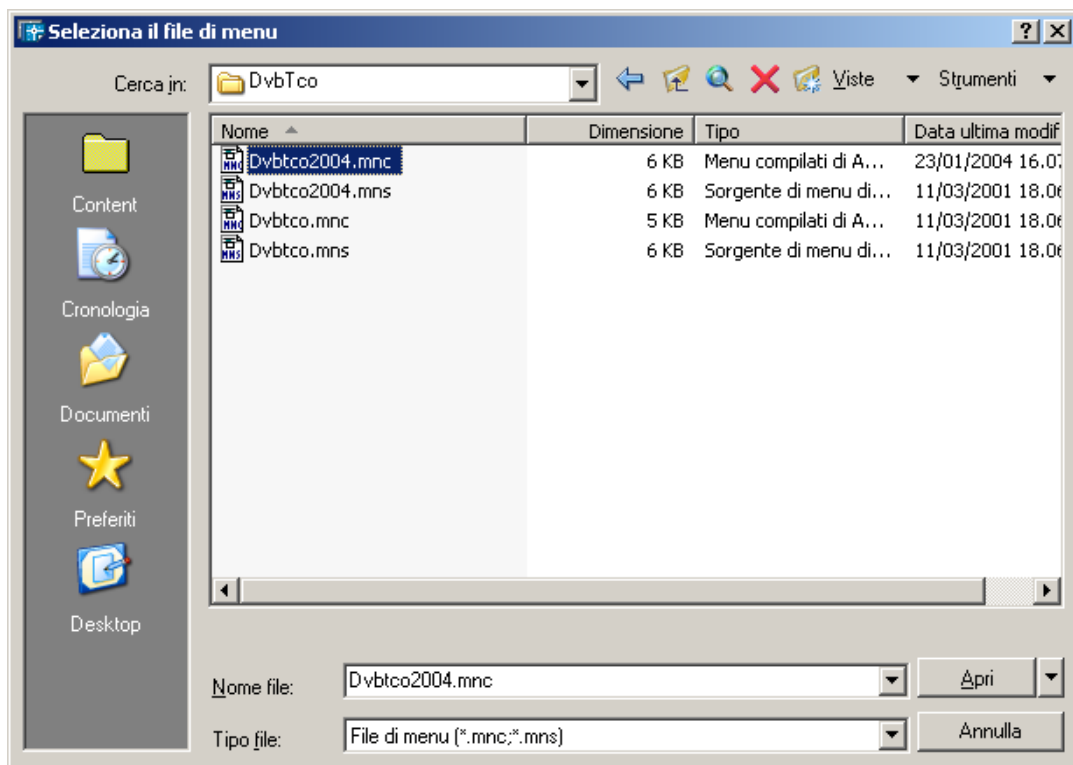
Comando: `_menuload`



Click su Sfoglia

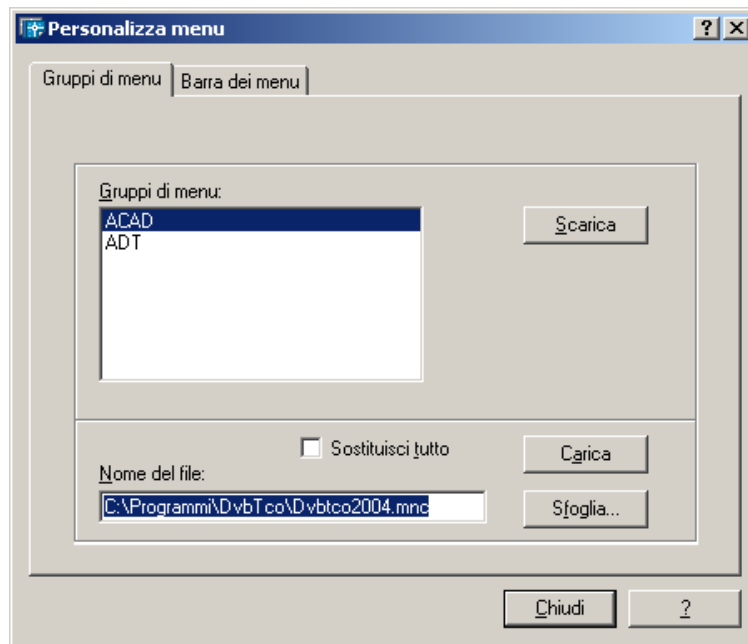


Selezionare il percorso C:Programmi\DvbTco
Click su Apri

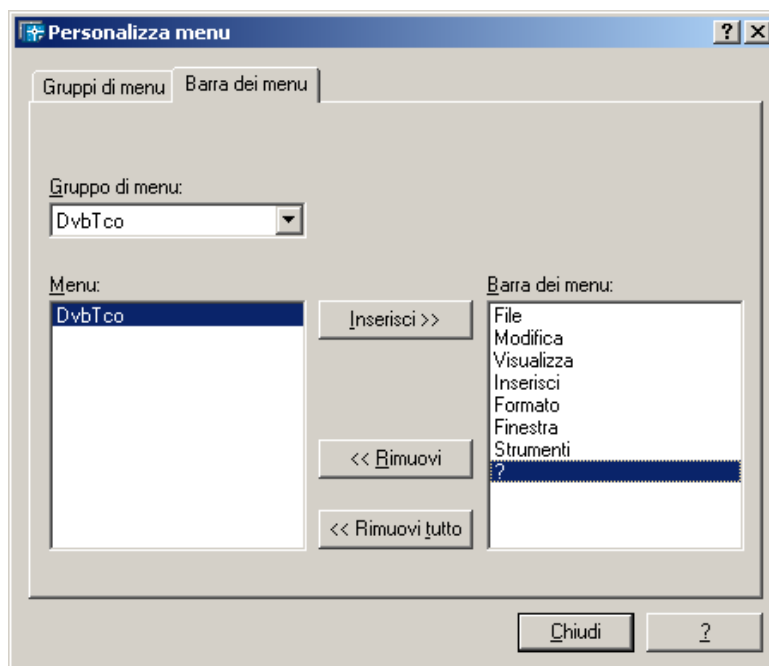


Selezionare Dvbtco2004.mnc (Autocad 2004) o **Dvbtco2006.cui** (Autocad 2006)

Click su Apri



Click su Carica



Nella scheda Barra dei menu selezionare come in figura.

Click su Inserisci

Il menu DvbTco viene inserito.

Aprirlo e caricare il programma.

